

FabMaker Studio Fabrication Quick Start Guide

To send designs to a Silhouette digital fabricator (Portrait 1,2,3; Cameo 2,3,4 and 4 Pro; Curio), you need to install **FabMaker App** and **Silhouette Studio**, separate free applications, on a Mac or Windows machine.

FabMaker App

To send designs to the digital fabricator, you need to first download and install the free **FabMaker App**. This install can be downloaded from within the program or on the [System Requirements](#) page for FabMaker Studio. Although FabMaker Studio files can be created on mobile devices like a tablet or Chromebook with an Internet connection, designs must be sent to the digital fabricator from a Mac or Windows machine.

Silhouette Studio

In order for the Silhouette digital fabricator to function properly, you will also need to install **Silhouette Studio**, which contains the language that tells your computer how the cutter operates. Silhouette Studio can be downloaded [here](#). Silhouette Studio should be started and closed at least once to activate the drivers, but it must NOT be running while fabricating with FabMaker Studio.

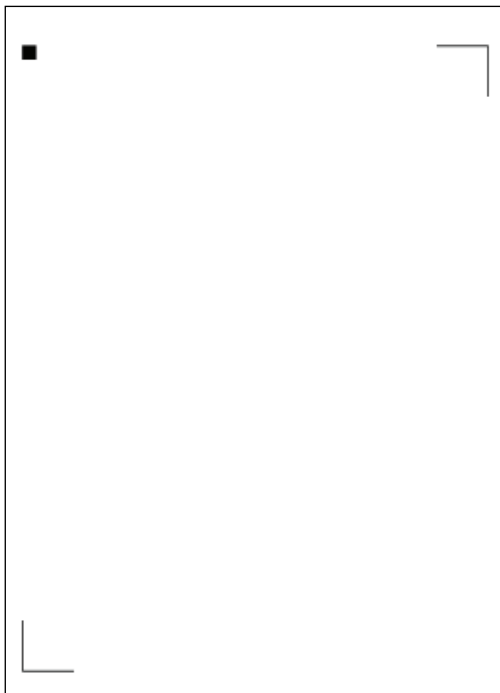
Printing a Project

From an open FabMaker Studio project, click the **Print** icon on the top menu bar to open the Print dialog.

Registration Marks

Registration marks are a feature for projects that are printed before being sent to a Silhouette digital fabricator. Using registration marks will create black symbols in the corners of the printed project to align the project for proper cutting. Choose your model of Silhouette digital fabricator from the drop-down menu to apply registration marks to the project.

Note: If you are using a Cameo 2, 3, 4, 4 PRO, please select registration marks for Cameo 2015. If you are using a Portrait 2, 3, please select the registration marks for Portrait.



Print to PDF

Choose **Print to PDF** to export your project as a PDF file and save to your computer.

Open and print the .pdf document in your chosen PDF viewer, making sure that **Scale** is set to 100%.

Do not select any “fit to page” settings as it will make the print slightly smaller than 100%.

Google Cloud Print

Choose **Google Cloud Print** to print your project through Google Cloud.

Choose your Google Cloud Print enabled printer from the prompt. Print the document.

Note: **Fit to Page** must be set to No Fitting for registration marks to be detectable by the fabricator.


Fabricating a Project



Fabricate Menu

Install **FabMaker** on a Mac or Windows computer.

Be sure the digital fabricator is turned on and connected to the computer with a USB cable.

 Select the **Fabrication** icon. If you are doing a multi-page project, click the page you want to cut. Select “Send to FabMaker App” to download the .fabmaker project file.

Locate the downloaded .fabmaker project file and click to open with the **FabMaker** app.

Project Title: The title of the downloaded .fabmaker project file will appear in the “Project Title” line and the project image will appear in preview. If you don’t see a file name or a project preview, select **Open Project** to locate the .fabmaker project file on the computer.

Detected Cutter: When your digital fabricator is on and connected to the computer, the name of the connected digital fabricator will appear next to the Detected Cutter line. If you don’t see the name of your digital fabricator, first confirm that the fabricator is turned on and connected to the device. Second, close and relaunch the **FabMaker** app. The cutter should now be detected.

Registration Marks: If you printed your design before cutting, check **Use Registration Marks**. The fabricator uses registration marks to align cut and fold lines with the printed image. If the design was not printed, leave **Use Registration Marks** unchecked.

Choose Media: Choose the media type from the dropdown menu. The recommended blade setting for that media is displayed to the right. If using an older silhouette you will have to check the blade setting on the digital fabricator and adjust it if necessary.

Advanced Settings: Check **Advanced Settings** if you want to manually adjust speed and thickness. This is generally not necessary because FabMaker Studio sets defaults based on the choice of media.

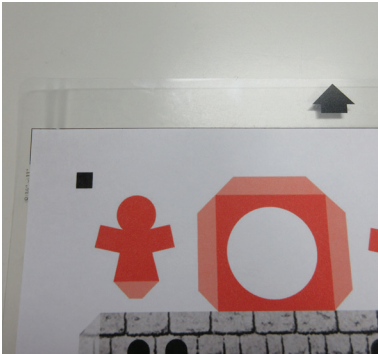
Speed: Use the slider to adjust speed. To achieve the best results, slower speeds are recommended for thicker materials or designs that are more intricate.

Thickness: Use the slider to adjust thickness. Thicker materials will likely require higher thickness levels.

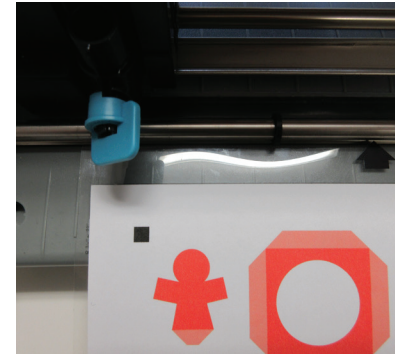
Send to Cutter: Select this button to send the design to the digital fabricator and start fabricating!

Finished! Select **Unload Media** on the digital fabricator and remove the project from the cut mat.

Silhouette Portrait



Mount printed or bare cardstock onto the Silhouette Portrait cut mat by placing the project onto the sticky surface so that the top-left corner of the paper is aligned with the marks on the cut mat labeled 8 1/2" x 11". Feed the cut mat into the Silhouette Portrait by aligning the left edge of the cardstock (not the cut mat) to the center line of the group of short lines on the left side of the feed area. Press the **Load Cut Mat** button on the Silhouette Portrait.



Silhouette Portrait 2 and 3



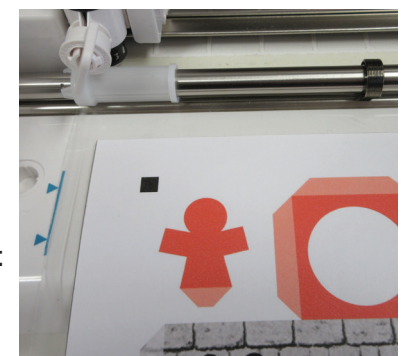
Mount printed or bare cardstock onto the Silhouette Portrait 2 cut mat by placing the project onto the sticky surface so that the top-left corner is aligned with the marks on the cut mat labeled 8 1/2" x 11" (see image above). Feed the cut mat into the Silhouette Portrait 2 and 3 by aligning the left edge of the cardstock (not the cut mat) to the center line of the group of short lines on the left side of the feed area. Press the **Up Arrow** button on the Silhouette Portrait 2 and 3.



Silhouette Cameo



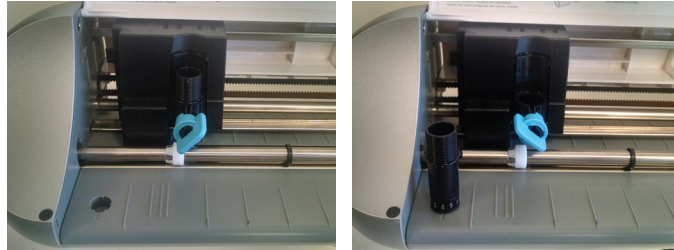
Mount printed or bare cardstock onto the Silhouette Cameo cut mat by placing the project onto the sticky surface so that the top-left corner of the page is aligned with the top-left corner of the black grid on the cut mat. Feed the cut mat into the Silhouette Cameo by aligning the left edge of the cut mat to the blue guide line on the left side of the feed area. Press the **Load Cut Mat** touchscreen button on the Silhouette Cameo (2) or the up arrow on the Cameo 3, 4, and 4 Pro.



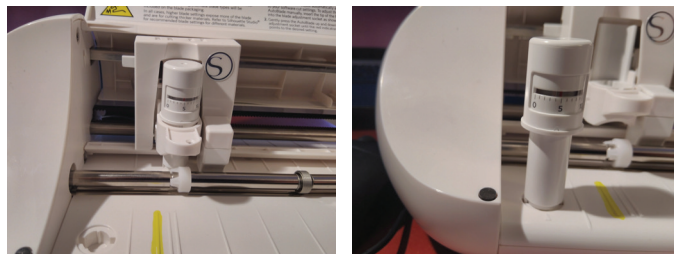
Click **Send to Cutter** to begin fabricating your project. The Silhouette digital fabricator will scan and detect the registration marks if the option is selected, and proceed to cut the paper. When the cut process has completed, the Silhouette digital fabricator will eject the cut mat. Press the **Unload** button or down arrow on the cutter to release the cut mat completely. Carefully peel the cut cardstock off of the cut mat.

Adjusting The Blade

To adjust the blade on the Portrait 1, Cameo 2, and Curio, twist the key on the cut head to the left and remove the cylindrical blade housing from the machine. On the end of the blade you will see a series of numbers and a red mark to indicate the current length setting. Insert the blade housing into the socket to the left of the machine with the red mark aligned with the arrow embossed into the socket. Twist the blade housing until the arrow points to the desired blade length and place the blade back into the cut head.



To adjust the blade on the Portrait 2 and Cameo 3, pull the lock tab out to release the cylindrical blade housing from the machine. You will see a series of numbers on the top of the blade housing. A red mark indicates the current length setting. Insert the blade housing into the socket to the left of the machine with the numbers facing out. Press down one and then release on the blade housing and the red arrow will move to the left or right depending on the current setting. Continue to press down and release until the arrow points to the desired blade length and place the blade back into the cut head. Push tab in to lock the blade in place.



Blade Housing

The Cameo 3, 4 and 4 Pro have two options for blade housings. Please use the first unit.

